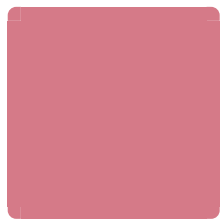
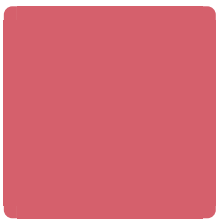
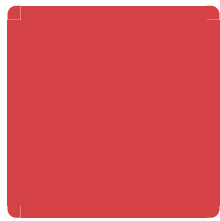
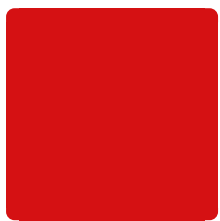


GETTING STARTED WITH  
**TEXAS**  
**FCCLA**

2023 - 2024



**TEXAS**  
**STATE ASSOCIATION**





TEXAS ASSOCIATION  
FAMILY, CAREER AND COMMUNITY LEADERS OF AMERICA

1107 W. 45th Street

Austin, TX 78756

(512) 306-0099; [www.texasfccla.org](http://www.texasfccla.org)

August 2023

To Family and Consumer Sciences Teacher Addressed:

We are delighted that you are interested in affiliating a Family, Career and Community Leaders of America (FCCLA) chapter in your school. This organization is considered an integral part of the Family and Consumer Sciences curriculum and offers students leadership opportunities, cooperation skills and decision-making skills all related to the family. FCCLA also provides community service activities tied to service learning in many areas. There are numerous programs/projects identified by the state officers available for student participation. Each of these programs are tied to a curriculum area and provide avenues for learning, service and recognition. These programs are all identified on the national website, [www.fcclainc.org](http://www.fcclainc.org). Many resources and lesson plans are available from national headquarters. Additionally, Texas information is available on the Texas FCCLA website, [www.texasfccla.org](http://www.texasfccla.org)

State statistics prove that students enrolled in career and technology classes and involved in youth organizations score higher on the Texas standardized tests than students that are not enrolled. This coupled with life skills and leadership opportunities provided to our members help them become productive, well-rounded, contributing members of society.

Region and state officers are required to provide assistance to newly formed chapters. If you would like this assistance, please let me know and we will assign someone to work with you. We will be glad to do whatever will benefit you and your students. We also provide fall leadership workshops in which local members may participate. The dates and locations are posted on the Texas FCCLA website. We encourage you to participate in one of these. If you would like to host a meeting for your students, we can also arrange officers to assist.

In addition to these meetings, we offer training at region, state and national conferences where students can compete in competitive events or gain skills from concurrent sessions on topics identified by the youth. Student recognition is given to those that participate in many of our projects.

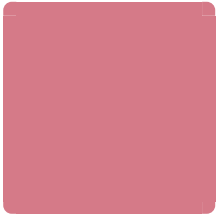
If you need additional resources or suggestions for getting started, please do not hesitate to call me at (512) 306-0099 or e-mail me at [misaacs@texasfccla.org](mailto:misaacs@texasfccla.org). Also let us know if you would like a mentor this year. Congratulations on taking the first step in organizing a chapter. We will do whatever it takes to help your students reap the benefits from being a part of our student-led organization.

Sincerely,

*Melissa*

Melissa Isaacs, State Advisor  
Family, Career and Community Leaders of America

Enclosure



# Square One: Review Handbooks & Bylaws

## National FCCLA New Advisor Handbook

This handbook offers valuable insight for new and potential chapter advisors in the areas of chapter management, competitive events, advisor roles and benefits, and basic FCCLA information.

<https://fcclainc.org/sites/default/files/New%20Advisor%20Handbook.pdf>

## National FCCLA Membership Handbook

This resource helps you recruit, retain, and recognize your chapter members.

It can be accessed here: <https://www.texasfccla.org/chapter-resources>

## Texas FCCLA Chapter Handbook

This resources provides basic FCCLA information for the year. It can be

accessed here: <https://www.texasfccla.org/chapter-resources>

## Region & State Bylaws

These can be accessed here: <https://www.texasfccla.org/about-us>

## Texas FCCLA Dress Code

All members must be in official dress at all region and state conferences and events. Please note that the **national** FCCLA dress code for all members will be the official red FCCLA blazer.

<https://www.texasfccla.org/dress-code>



# **Square Two: Request a Mentor**

If you would like a mentor,  
please complete the  
following Google form:

[https://forms.gle/g7V3SN7z  
G7UyMzvH6](https://forms.gle/g7V3SN7zG7UyMzvH6)



# **Square Three: Set up Your Chapter and Recruit**

Set up chapter Bylaws, elect chapter officers, plan the year's activities for your chapter, and recruit new members.

Membership recruitment week is September 11 - 15, 2023. Visit this page for the week's themes and activities:

<https://www.texasfccla.org/membership-1>

# Square Four: Affiliate

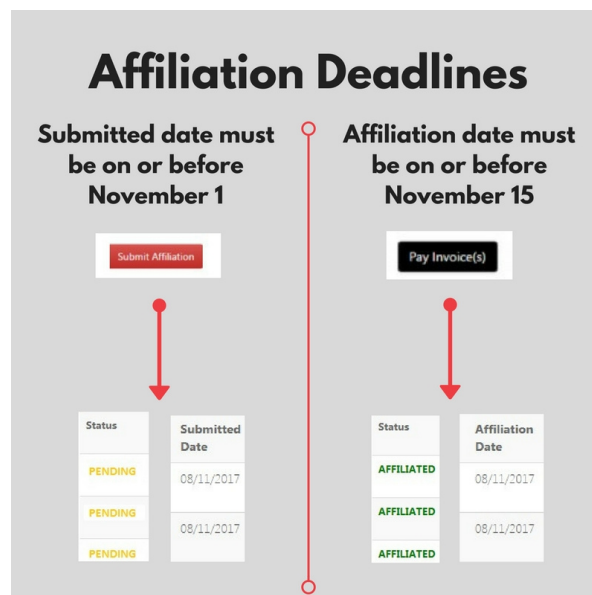


## The Basics:

- State dues are \$9 and national dues are \$9 for a total of \$18 per person.
- The minimum chapter size is 12 members.

## How to Affiliate:

- Follow this link to log-in to the national affiliation portal or to request a new chapter: <http://affiliation.registermychapter.com/fccla>
- Affiliation for the new school year opens at the beginning of August
- Affiliation Deadlines: chapter member names must be electronically submitted on or before **November 1**; payment must be posted in the portal by **November 15**
- Affiliation Instructions: <https://fcclainc.org/join/chapter-affiliation>



# Square Five: Register for Competitive Events and Region Conferences



## Overview of Rules

- STAR and Proficiency Event competition takes place at the five region conferences. If entries place in the top 5 and receive a minimum score of 60, they will advance to state competition. The top 2 in each event (except Baking and Pastry & Culinary Arts) will advance to national competition. The top 3 individuals in Baking and Pastry and Culinary Arts advance to national competition.
- Members will compete in the Level 1, Level 2, or Level 3 category depending on their grade.
- A chapter's size determines the number of competitive event entries allowed. Please review the chart here:  
<https://www.texasfccla.org/competitive-events>

Review all of the Texas FCCLA Competitive Event Guidelines (updated in mid-September each year), located here: <https://www.texasfccla.org/competitive-events>

Register for competitive events and the region/state conferences

here: <https://webportal.registermychapter.com/pickconf/FCCLA/TX/428>

# Deadlines and Calendars

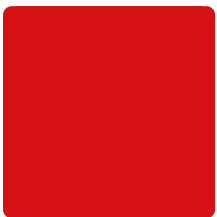
- The Texas FCCLA Calendar of Events and Deadline Calendar can be found here: <https://www.texasfccla.org/calendar>

## Important Deadlines

- Affiliation Deadlines: chapter member names must be electronically submitted on or before November 1; payment must be posted in the system by November 15
- Competitive Event Registration Deadline: Entries must be submitted online by 11:59 p.m. CST on December 1. Competitive event payment must be **received** at the Texas FCCLA office (via check or credit card) by 11:59 p.m. CST on December 31.
- Region Conference Early Registration Deadline: December 1

## Other Events

- Texas FCCLA New Advisor Training: held in September each year. More information can be found at: <https://www.texasfccla.org/chapter-resources>
- Fall Leadership Workshops: <https://www.texasfccla.org/fall-leadership-workshops-1>





# Programs

## **Power of One**

Power of one helps students find and use their personal power. Members set their own goals, work to achieve them, and enjoy the results. <https://www.texasfccla.org/power-of-one>

## **Spotlight on Projects**

Members create a display board for a project they completed. Conference attendees will vote and evaluators will score the top projects at the Region conferences. The top projects will advance to the State conference.

<https://www.texasfccla.org/spotlight-on-projects-1>

## **Family & Consumer Sciences Assessments (FCSAs)**

These are objective tests given at Fall Leadership Workshops, Region conferences, and the State conference. FCCLA members may take the tests at all events, but may only take one test at each.

<https://www.texasfccla.org/fcsa>



# Awards and Recognition

Chapters and advisors may apply for awards or nominate community members. Please review the awards here: <https://www.texasfccla.org/nominate>

National FCCLA Awards:  
<https://fcclainc.org/lead/advisers/awards>

## Running for Office

Each chapter may have one officer candidate. Chapters with more than 50 affiliated members may have two officer candidates. Any member from a chapter meeting the candidate requirements may run for office. Region, state and national officers serve the members and carry out plans for the year. Officers must commit to carrying out their responsibilities and attending required events. For more information and the officer candidate application, follow this link: <https://www.texasfccla.org/run-for-office>



# Scholarships

Texas FCCLA awards over \$1.9 million in scholarships each year.

## Scholarships

Any graduating senior FCCLA member for the current year may apply for scholarships. Scholarship applications must be submitted by **February 1**. Follow this link for requirements and applications:

<https://www.texasfccla.org/scholarships>

## Competitive Event Scholarships

A number of scholarships are awarded to competitive event participants. Please review the list located in the resources section of the Texas FCCLA Competitive Event Guidelines here: <https://www.texasfccla.org/competitive-events>



# Resources

- Texas FCCLA Website: [www.texasfccla.org](http://www.texasfccla.org)
- National FCCLA Website: [www.fcclainc.org](http://www.fcclainc.org)
- Texas FCCLA Advisors Resource Drive:  
<https://drive.google.com/drive/folders/0B3-4NuvQZDHvOWdkU2Q0Nlk0U3c>
- Region and State  
Bylaws/Constitution: <https://www.texasfccla.org/about-us>
- Texas FCCLA Dress Code: <https://www.texasfccla.org/dress-code>
- Region Map and List of Counties:  
<https://www.texasfccla.org/membership-1>

Texas FCCLA Office  
1107 W. 45th Street  
Austin, TX 78756  
(512) 306-0099

## Follow Texas FCCLA on Social Media:



<https://www.facebook.com/TexasFCCLA/>  
<https://www.facebook.com/groups/TexasFCCLAAdvisors/>



<https://www.instagram.com/txfccla/>



<https://twitter.com/TexasFCCLA>

